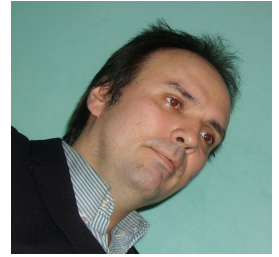


Curriculum Vitae



Name : Philip Christopher Shields
Address : 39 Galsworthy Avenue, Manchester, M8 0SU
Telephone : 0161 278 6704
mobile : 07960687818
Nationality : British national with Hong Kong permanent residency
Date of Birth : 19 January 1965
Driving License : Full clean license since 1982
Languages : English, basic French and Mandarin Chinese
Computer skills : Microstation, VectorWorks, AutoCAD, Adobe Photoshop, After Effects, 3D Studio Max, Vray, Maxwell Render, Web design, Adobe Flash, Drupal (webmaster and developer of www.a-d-g.net, www.eco-lines.net and www.bespoke-homes.com)

Employment History

ADG Studio Ltd (London, Manchester)

June 2001- Present day

Own company working on residential design projects, and computer imaging for other architects and developers. Please refer www.a-d-g.net. Currently developing on-line residential plan service www.bespoke-homes.com.

Private school (KunShan, China)

English teacher in international department (16 – 18 y/o)

May 2014 – July 2014

Secondary school (JiuJiang, China)

English teacher in secondary school and surrounding primary schools, class size 45 – 60 students (7 – 15 y/o)

September / October 2013

Pentagram (London)

October 2011 – May 2012

Contract position detailing hotel resort in Gabon, Africa

Hugh Cullum Architects (London)

September 2006 – July 2008

Contract position working on commercial shop fit outs and preparing construction drawings for a high end residential property

Leslie Jones Architects (Manchester)

2004 – April 2005 Contract position working on retail developments in planning stages

Percy Thomas Partnership (HK) Ltd. (Architects, H.K.)

October 1997 – June 2001

Developed the design aesthetic and working details of Yau Tong MTR Railway Station.

Worked as a design architect for the MTR Tseung Kwan O South Station

Dezsenyi Associates Ltd. (Architects, H.K.)

March 1995 – October 1997

Produced working drawings for a package of 32 Airport Utility Buildings. Worked on the scheme design of the Bangkok MRTA underground railway, and produced working drawings for the Bangkok Mass Transit System 'Central Station'. Produced interior designs for corporate clients

Mott Connell Ltd. (Civil & Structural Engineers, H.K.)

January 1995 – March 1995

Produced Reinforced Concrete drawings on AutoCAD.

Cheung Wing Associates (Architects, H.K.)

June 1994 – January 1995

Worked on the scheme design of an industrial building in Mainland China, and an office tower in Tsuen Wan. Also involved with the fit out of an office and computer suite located in Vicwood Plaza.

Building Renovation Work (U.K.)

December 1992 – May 1994

Experience in residential building construction work (brickwork, plastering, joinery, plumbing, installation of central heating, electrical wiring).

Maunsell Consultants Asia Ltd. (Civil & Structural Engineers, H.K.)

June 1991 – July 1992

Prepared civil R.C. drawings. Produced measured perspective presentation drawings, when required.

Nishimatsu Construction Company Ltd. (H.K. branch)

November 1990 – April 1991

Worked as site draftsman producing working drawings for two 'Jusco' shop fit outs.

Gordon Allen Associates (Architects, U.K.)

April 1988 – September 1988

Worked as Assistant Architect on small domestic and commercial property.

Percy Thomas Partnership (Architects, U.K.)

December 1987 – March 1988

Temporary employment as Architect's assistant

Downs and Variave (Architects, U.K.)

February 1987 – August 1987

Developed a scheme for the refurbishment of the Samaritan Center, Manchester, and design development of a wine bar in the Arndale Center, Manchester. Among other small developments

Professional Qualifications

Member of the RIBA and ARB

Allied member of the (U.K.) Society of Architectural Illustration

2013	London Teacher Training College	TEFL (Distinction)
2003	De Montford University	RIBA Part III
1988 – 1990	Polytechnic of North London	Dip Architecture
1983 – 1986	Liverpool University	BA Architecture